

INHERIT THE WIND

THE PLAY

Inherit the Wind tells the story of one of the greatest courtroom dramas of twentieth century America. While the Scopes Monkey Trial provided the basis for the play, the authors of the drama used creative license and changed the factual elements to communicate the ideas and concepts of the original trial. Written nearly thirty years after the actual trial, the play provides a vehicle for demonstrating the conflicts between **fundamentalisms** and **religious traditionalism** on the one hand, and **evolution** and the **freedom of thought** on the other. The authors used the trial as a means to present these universal and timeless concepts. It must also be considered that the play was written in the 1950's, while America was struggling with the issues of the **cold war**, **McCarthyism**, and the rights of the individual versus the state. While there is a risk in bringing history to life through drama, the central issues are clearly not of the past. They are as pertinent now as they were in the 1920's and the 1950's, and they will continue to create conflicts in societies which value the freedom of ideas, religion, science and politics.

America in the 1920's

The 1920's were a time of enormous change in America. Before World War I, 42% of all Americans lived on a farm. By the end of the twenties this percentage had dipped to 25%. Prior to World War I only 7% of all Americans finished High School. By the end of the '20s the rate was almost 41%.

Two additional amendments to the **Constitution** started the decade and defined its character. The enactment of **Prohibition** marked the beginning of a "**Noble Experiment**" that attempted to uplift America's moral character through the banishment of alcohol. The experiment failed and today references to the "**Roaring Twenties**" evoke images of lawlessness and moral decay. The **19th Amendment** extended the right to vote to women and subsequently changed the role of women in our society.



CONNECTING TO THE TEXT: PITTSBURGH IN THE 1920'S



Population: 588,343. The population of the city of Pittsburgh today is 350,363.

Downtown Pittsburgh, 1920's (Left) now it is Point State Park.

1920 November 2
Allegheny County women appeared at polling places to cast their first ballots.

1920 November 2
Station KDKA, first licensed radio broadcasting station, gave the Harding-Cox election returns as its

first scheduled broadcast. It was the first broadcast of its kind in the country.

1921 January 2
Church service was broadcast from the Calvary Protestant Episcopal Church in East Liberty -- the world's first such broadcast..

1921 November 4
Census report for 1920 listed 20,297 persons over 10 years of age in Pittsburgh as illiterate.

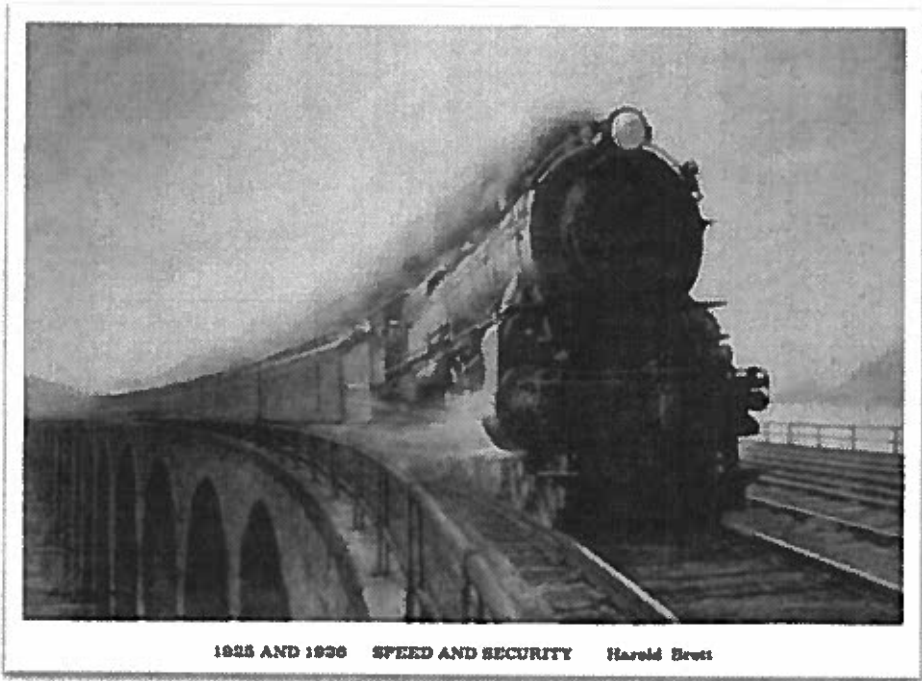
1924 November 6
Pitt Chancellor John G. Bowman announced plans for a "52-story" Gothic skyscraper, the Cathedral of Learning. (Left)



A 1920's era typewriter

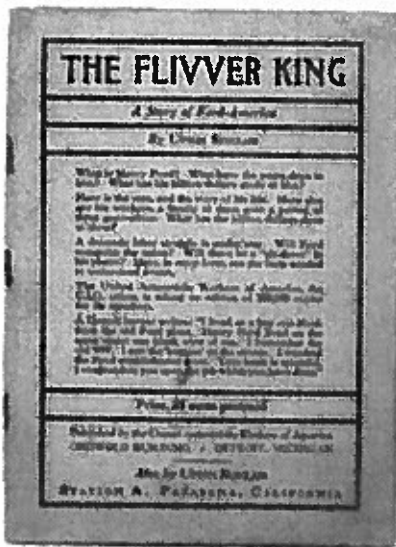


Figure 1 Pirates win the World Series 1925



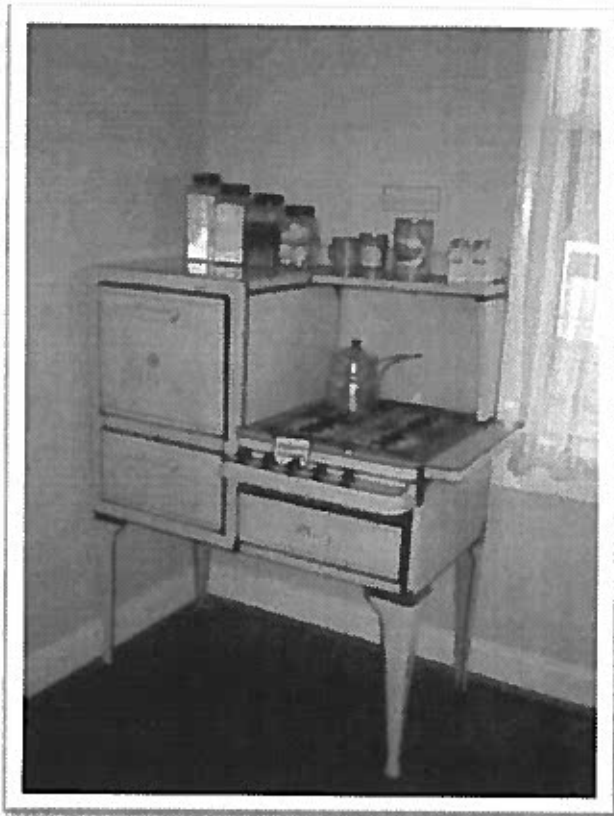
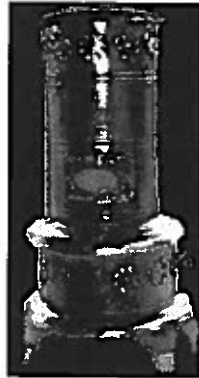
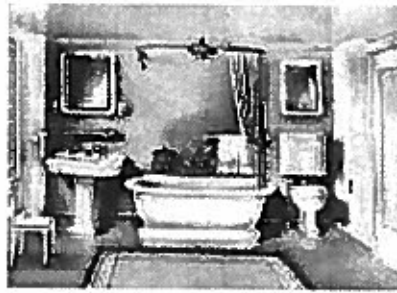
1925 AND 1936 SPEED AND SECURITY Harold Brett

1925 May 14
 The largest electric locomotive in the world, 152 feet long and weighing 1,275,900 pounds, was given a test run at Westinghouse's East Pittsburgh yards.



What is a Flivver?

It usually refers to a Ford Model T, but can mean any small, cheap car of its day. The term later referred to early flying machines.



Can you identify all of these items?

Advertising, Stove and Ovens, Monitor Top Refrigerator, Ice Box, Victrola, Furnace, Radio, Telephone, Bathroom, Toaster





The KDKA Studio



Charlie Chaplin



Mary Pickford

**Popular Phrases of
the 1920's**

Get hot!

It's the cat's meow!

23 Skidoo!

Say's you!

So's your old man!

*Get out while the
getting is good!*

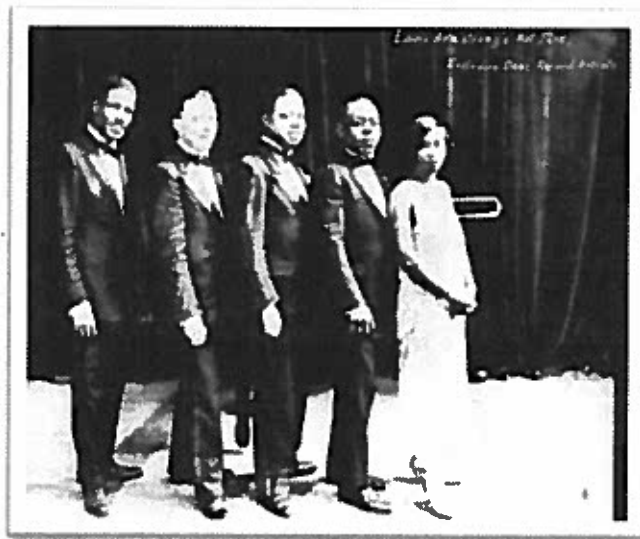


RE-FRESH YOURSELF!
 Enjoy the sociable drink — the
 beverage that's so good others
 are always glad to join you —
 COCA-COLA

Coca Cola Advertisement



The record player, called a
Victrola, became popular



Louis Armstrong

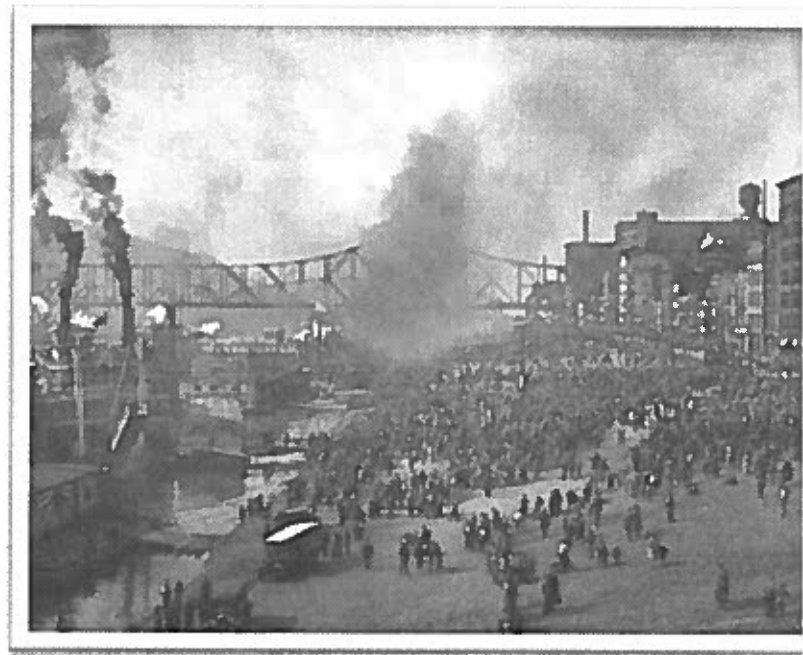
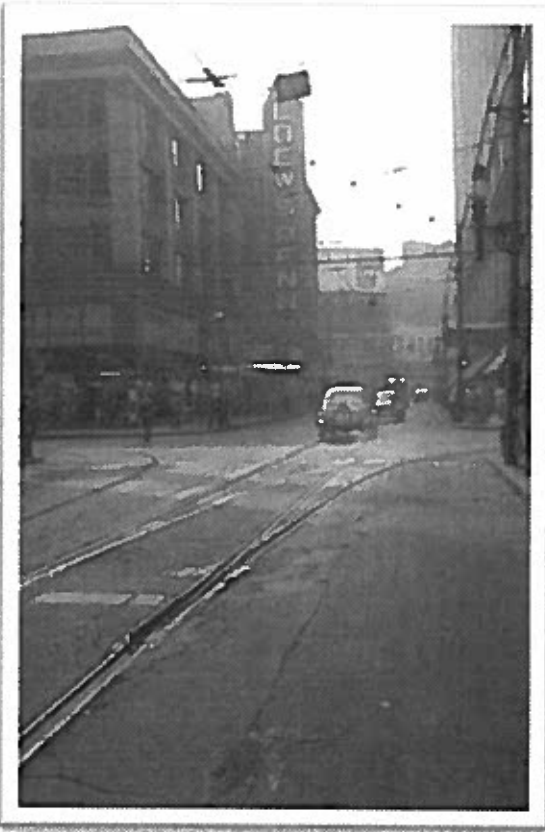
8XK in Pittsburgh

In 1919, Westinghouse engineer Frank Conrad reopened his home-based experimental station 8XK. He went on the air two evenings a week, playing records that were provided by a local music store in exchange for on-the-air plugs. His broadcasts were very popular in the Pittsburgh area.



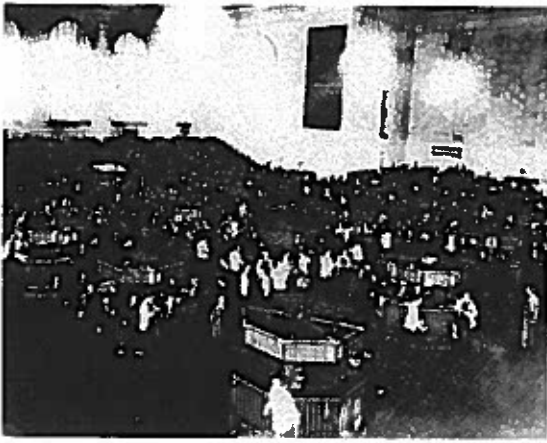
1926 January 26

Marcus Loew announced plans to erect the largest theater in Pennsylvania, a 4000-seat house on the site of the old Hotel Anderson, Sixth and Penn, at cost of \$2,500,000.



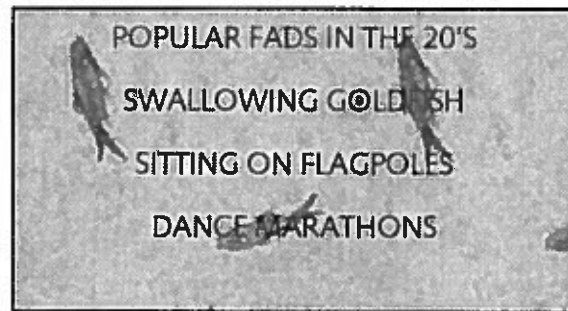
1929 January 11

Declaring that the city should assume leadership in the fight against air pollution, City Council authorized installation of smoke prevention equipment at the city's pumping station at Brilliant.



The Stock Market Crash

On the surface, the 20's appeared to be a very prosperous and optimistic decade. It all came to a screeching halt in October 1929, when stock speculation, margin buying, and many other economic factors caused the stock market to *crash*.



POPULAR MUSIC STYLES OF THE 1920'S

Jazz

Blues

Show tunes

Hillbilly Music

Novelty Songs



Buddy, can you spare a dime?

Ain't she sweet, just a walk'in down the street...?

Yes, we have no bananas, we have no bananas today...

Every morning, every evenin, ain't we got fun? Not much money, oh but honey, ain't we got fun?